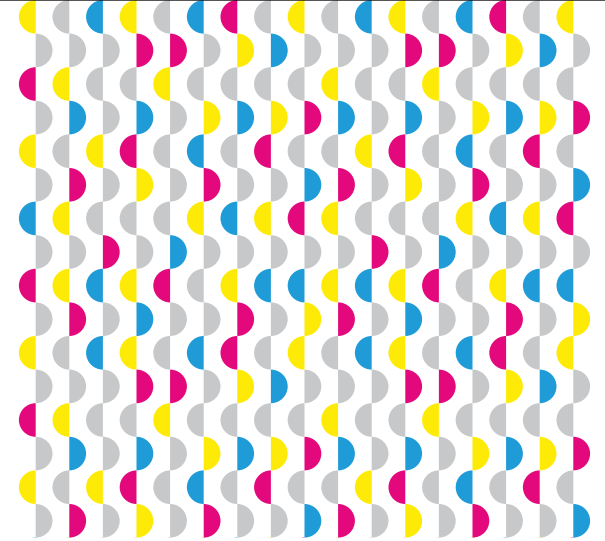


📍 Canal Road, Baniapara, P.O. Sahudangi Hat, Dist. Jalpaiguri-735135.

✉️ sspp.slg2023@gmail.com 🌐 www.salasarprintpack.com

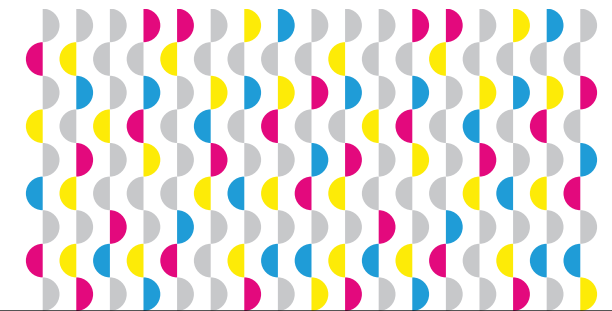
☎️ +91 81015 77740 📞 +91 81015 77740

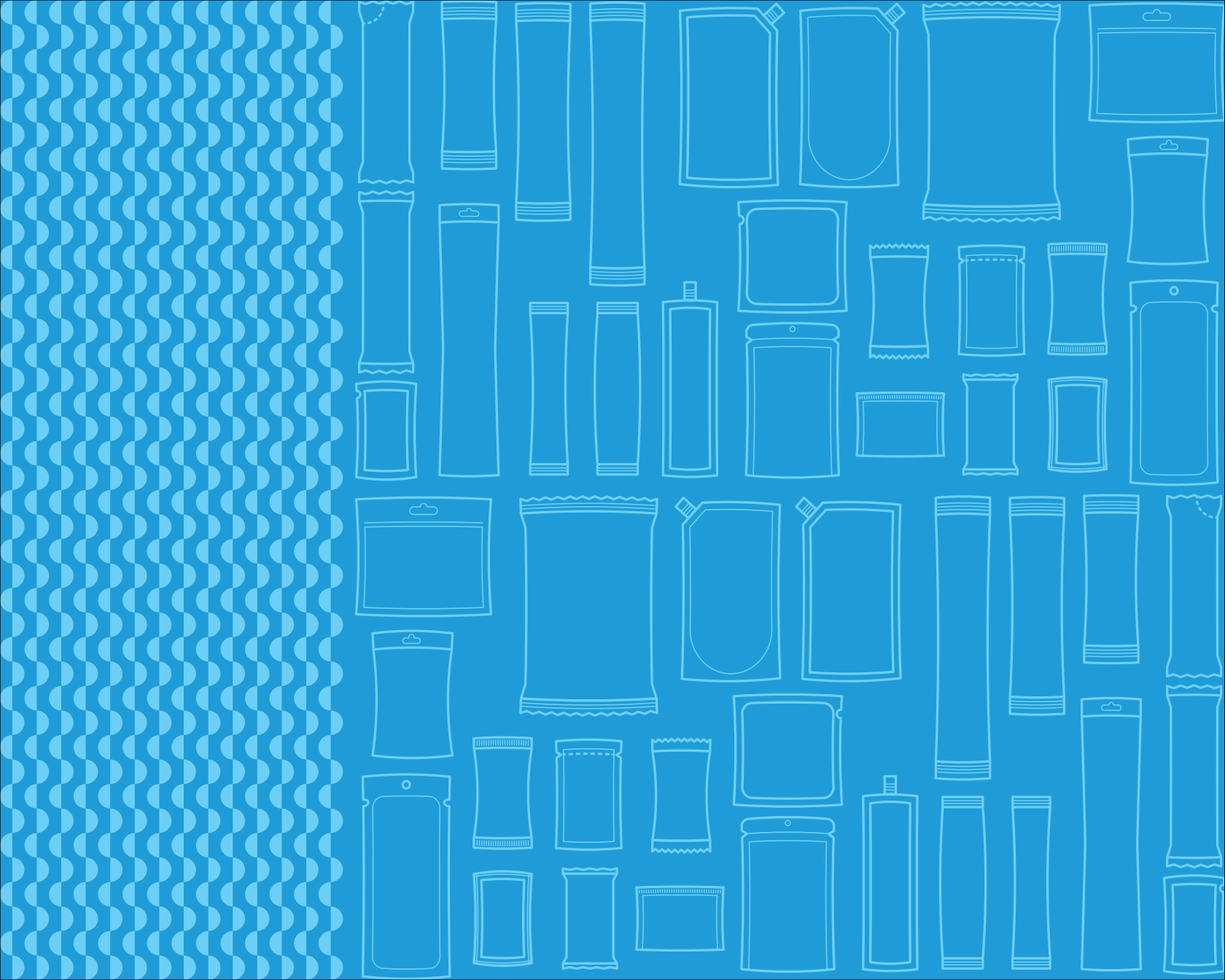
Designed by: www.creativestudio.net.in



Colouring Your Dreams

The World of Roto Gravure Print Process





Welcome to Shree Salasar Print Pack, a leading name in flexible packaging in North Bengal. With over five years of dedicated service, we've become a trusted partner for businesses seeking innovative and sustainable packaging solutions.

We began with a commitment to excellence and have grown by adapting to our clients' needs. Today, we proudly announce our second state-of-the-art manufacturing plant, reflecting our growth and commitment to meeting increased demand.

We specialize in customized packaging that protects, preserves, and enhances product appeal with advanced technology and strict quality control.

Customer satisfaction drives us. Our expert team works closely with clients to provide solutions that exceed expectations and build lasting partnerships.

As we expand, our commitment to innovation, sustainability, and customer service remains unwavering. We're excited about the future and thank you for choosing us as your packaging partner. Together, let's create a sustainable and successful future.

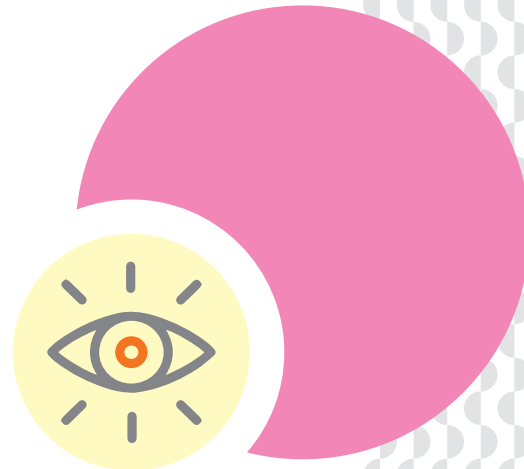


MISSION

Our mission is to revolutionize the flexible packaging industry in India by providing high-quality, eco-friendly, and customizable packaging solutions. We are committed to continuous innovation, exceptional customer service, and responsible practices that protect the environment and promote sustainable growth for our clients and society

VISION

To be India's most innovative and sustainable flexible packaging company, delivering cutting-edge solutions that enhance product integrity, reduce environmental impact, and foster long-term partnerships with our clients and communities.



4

INFRA & MACHINERY

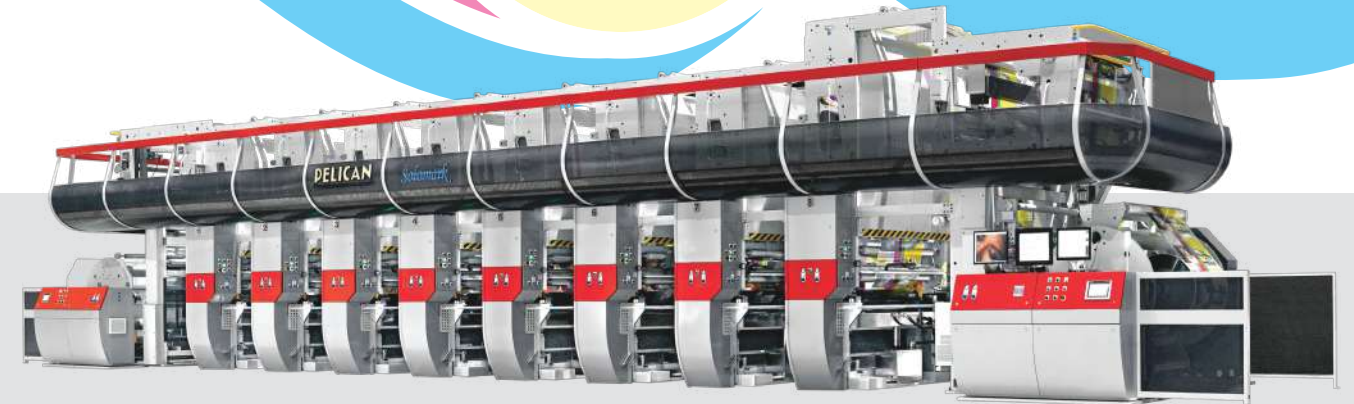
BUILT QUALITY OF FACTORY

SHED

Our 35,000 sq. ft. pre-fabricated shed with additional 50,000 sq. ft in the pipeline enhances our production capabilities and operational efficiency. Built with durable materials and modern safety features, it provides ample space for housing machinery, storage and packaging. The facility's design supports optimal workflow and energy efficiency, reflecting our commitment to quality and growth in flexible packaging production.

ROTOGRAVURE PRINTING

PELICAN SOLOMARK with monthly capacity of 300 tonnes seamlessly integrates advanced electronics with ergonomically designed mechanical components to deliver optimal performance. It offers enhanced operational ease, faster print register response, higher productivity, superior print quality, reduced waste and optimized ink, solvent and energy consumption, along with quicker job changeovers. Its distinctively designed and precisely machined steel frame, crafted with high-precision CNC-VMC technology, ensures long-term accuracy and high print quality at optimal operating speeds.



5

LAMINATION SOLVENTLESS MACHINE

PELICAN SOLOLAM is engineered to handle a diverse range of laminating tasks, meeting the growing demand for solvent-less lamination in the flexible packaging market. By seamlessly integrating next-generation electronics with efficiently designed mechanical components, this machine is built to deliver superior performance and productivity.



6

7

SLITTING

PELICAN SOLOSLIT is equipped with advanced differential winding technology, seamlessly integrating next-generation electronics with an ergonomically designed operating system.

Key features include high productivity, easy operation and the versatility to handle a wide range of flexible films, paper and laminates.



POUCHING MACHINE

We have four advanced pouching machines from Galaxy Packtech ,Speedway etc designed to cater to a wide range of flexible packaging needs. These machines are capable of producing various pouch types, including three-side seal pouches, stand-up pouches, zipper pouches, center and lap seal pouches, Centre gusset seal pouches and five-side seal pouches.



LAB FACILITY & QUALITY CONTROL PROCESS



- Inspection Machine
- Doctoring Machine
- COF Tester
- Dart Impact Tester
- Gauge Meter & Viscosity Cup
- GSM Weighing Scales
- Heat Seal & Bond Strength Tester
- Hot Air Ovens
- Opacity Tester
- Pouch Leakage Tester
- Tensile Strength Tester
- Universal Testing Machine
- Optical Microscope
- Hot Room

TEAM AND MANAGEMENT



Our team is comprised of industry veterans with over 25 years of experience in the flexible packaging industry. Their deep knowledge and expertise drive our commitment to excellence and innovation. Each member brings a wealth of experience in various aspects of packaging, from design and production to quality control and customer relations.

This seasoned team has navigated the industry's evolving landscape, adapting to new technologies and trends while consistently delivering high-quality, sustainable solutions. Their leadership and insights are pivotal in shaping our company's growth, ensuring that we remain at the forefront of the flexible packaging market. Together, we are dedicated to providing exceptional service and innovative solutions that meet the diverse needs of our clients.